

Alaska Department of Fish and Game

Habitat Section
Southeast Region



114-33-10230 Tributary 12

ADDITION

Water body name:

Quad: Juneau A-6

Upper Reach Latitude: 58.113002 **Longitude:** -135.860682

Lower Reach Latitude: 58.112397 **Longitude:** -135.866171

Survey date: 9/13/2022

Species & Lifestage:

Survey crew: RR, EF

Findings: We surveyed this uncataloged stream using a backpack electrofisher and GPS. We captured juvenile coho salmon and Dolly Varden. The tributary stream flows through a gravel channel, passing through a 7 ft wide arch culvert (Table 1; Figures 1–3).

Recommendations: Add this uncataloged stream to the anadromous waters catalog for rearing coho salmon (Figure 4).

Nomination: Pending

Table 1.—114-33-10230 tributary 12 survey data.

Waypoint	Latitude	Longitude	Notes	Stream Width ft	Stream Substrate	Habitat Features	Gradient %	Sample Effort	Sample Results
1785	58.112843	-135.861209	5' by 7' squashed pipe, 3" perch into jump pool. Minimal sediment in pipe.	12-15	Large Gravel Cobble			EF	2 CO
1786	58.113132	-135.860869	CO captured upstream of culvert.					EF	2 CO 3 DV



Figure 1.—Juvenile coho salmon captured at waypoint 1785.



Figure 2.—Culvert outlet at waypoint 1785.



Figure 3.—Channel at waypoint 1786.

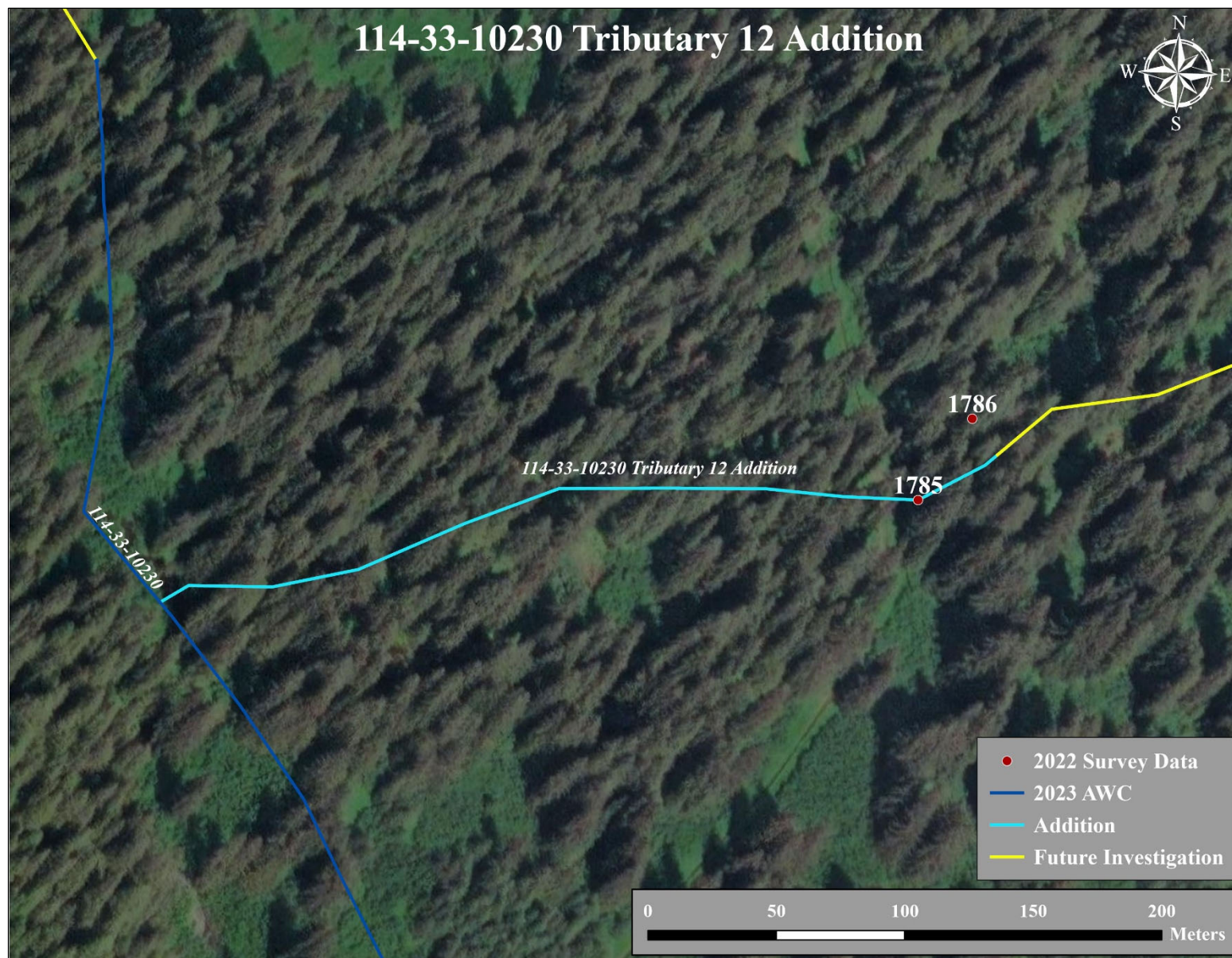


Figure 4.—114-33-10230 tributary 12 addition map.